

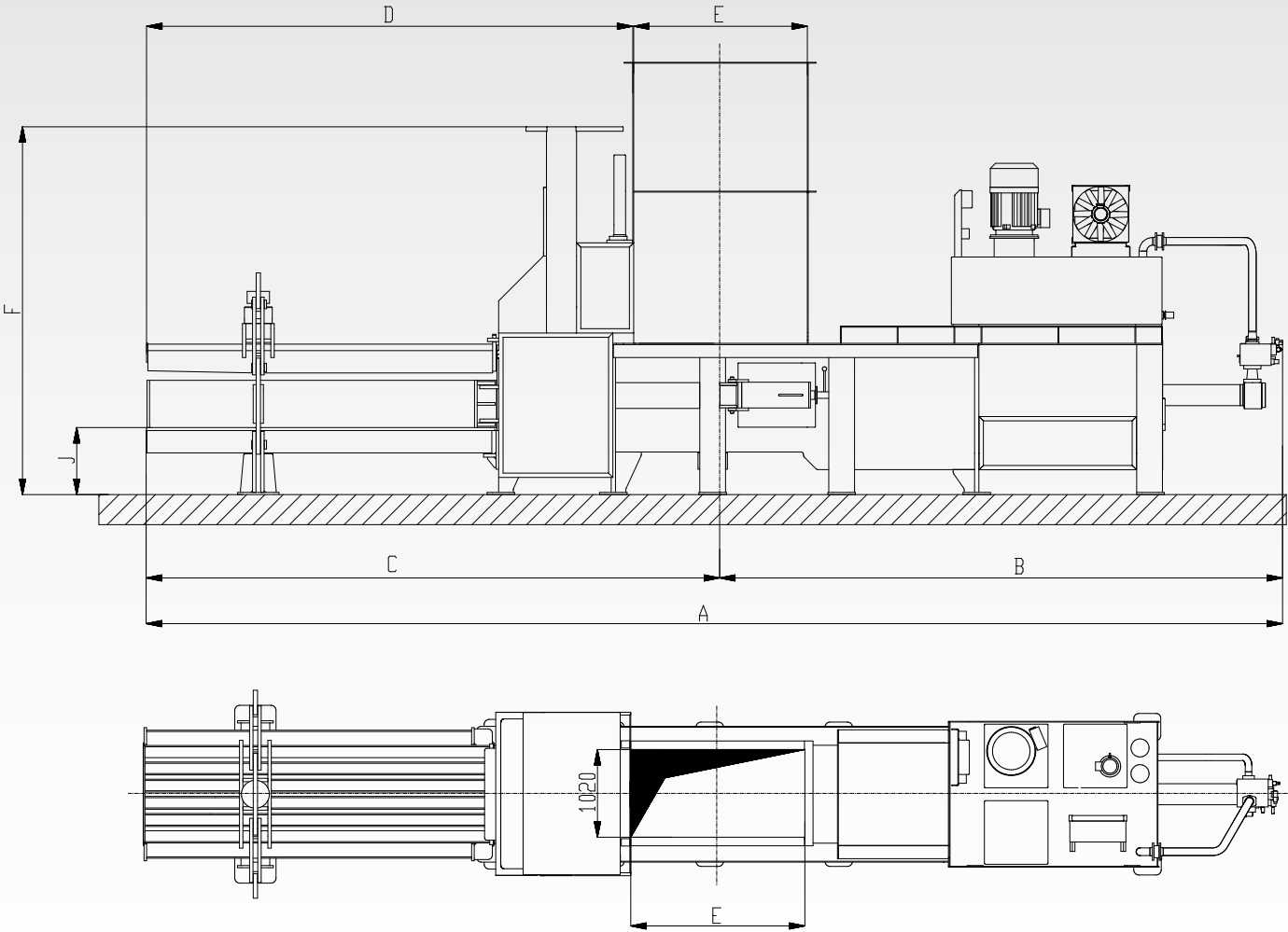
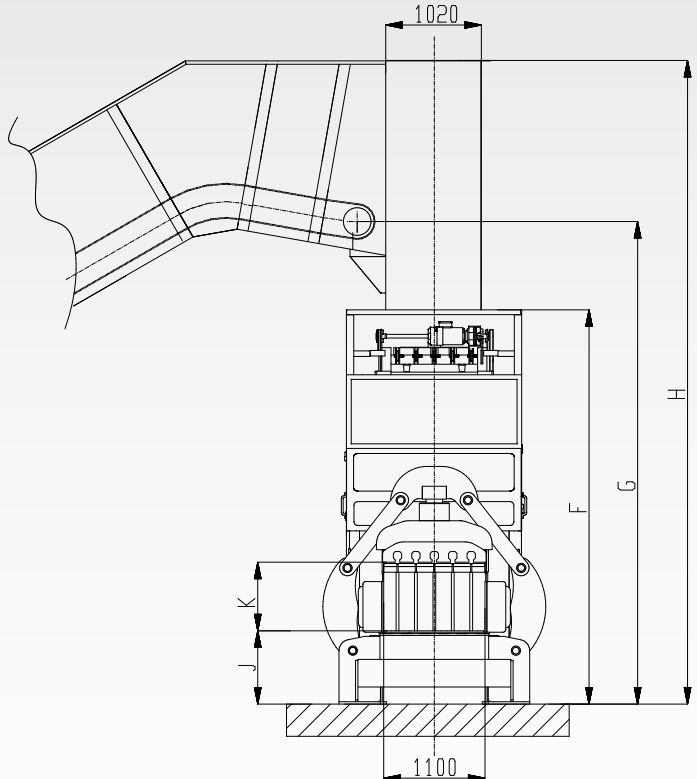
CHANNEL BALING PRESSES OF THE SERIES

UPAMAT®-V

18/04-300 HÖ OD

SPECIFIED PURPOSE

- Waste paper industry
- Sorting installations
- Materials recycling facilities (MRF)
- Refuse recycling facilities
- Plastic recycling facilities
- Classical waste management enterprises
- Special installations



TECHNICAL DATA

UPAMAT-V	60 V4 / V5	70 V4 / V5	80 V4 / V5	100 V4 / V5	120 V4 / V5	150 V5	200 V5
Pressing force	520 kN	600 kN	650 kN	800 kN	1.000 kN	1.300 kN	1.600 kN
Cutting force max.	630 kN	720 kN	800 kN	990 kN	1.200 kN	1.500 kN	2.000 kN
Specific pressure	76 N/cm²	87 N/cm²	97 N/cm²	120 N/cm²	145 N/cm²	124 N/cm²	165 N/cm²
Hopper opening	1.400 x 1.020 mm	1.600 x 1.020 mm	1.800 x 1.020 mm	2.000 x 1.020 mm	2.000 x 1.020 mm	2.000 x 1.020 mm	2.000 x 1.020 mm
Tunnel section (h x w)	750 x 1.100 mm	750 x 1.100 mm	750 x 1.100 mm	750 x 1.100 mm	750 x 1.100 mm	1.100 x 1.100 mm	1.100 x 1.100 mm
Throughput*	1 x 30 kW - 1 x 45 kW	1 x 45 kW - 1 x 75 kW	1 x 45 kW - 1 x 75 kW	2 x 55 kW - 2 x 75 kW	2 x 55 kW - 2 x 75 kW	2 x 55 kW - 2 x 75 kW - 3 x 75 kW	2 x 55 kW - 2 x 75 kW - 3 x 75 kW
20-30 kg/m³	4,5 t/h 9,0 t/h	8,5 t/h 12,0 t/h	7,5 t/h 10,0 t/h	15,0 t/h 17,0 t/h	13,0 t/h 15,0 t/h	16,0 t/h 18,0 t/h 26,0 t/h	13,5 t/h 15,0 t/h 22,0 t/h
35-50 kg/m³	7,0 t/h 14,5 t/h	14,0 t/h 19,0 t/h	11,0 t/h 16,0 t/h	22,0 t/h 26,0 t/h	20,0 t/h 23,0 t/h	26,0 t/h 30,0 t/h 42,0 t/h	20,0 t/h 23,5 t/h 36,0 t/h
60 kg/m³	8,5 t/h 15,5 t/h	15,0 t/h 23,0 t/h	13,0 t/h 19,0 t/h	26,0 t/h 31,0 t/h	24,0 t/h 27,0 t/h	29,0 t/h 34,0 t/h 50,0 t/h	24,0 t/h 28,0 t/h 40,0 t/h
100 kg/m³	11,0 t/h 22,0 t/h	21,5 t/h 32,0 t/h	20,0 t/h 29,0 t/h	40,0 t/h 47,0 t/h	37,0 t/h 44,0 t/h	44,0 t/h 52,0 t/h 70,0 t/h	37,0 t/h 45,0 t/h 61,0 t/h
Bale weight**	400 - 550 kg	420 - 580 kg	500 - 700 kg	500 - 800 kg	600 - 900 kg	1.100 - 1.700 kg	1.100 - 1.900 kg
Bale length	up to 1,80 m	up to 1,80 m	up to 2,00 m	up to 2,00 m	up to 2,00 m	up to 2,00 m	up to 2,00 m
Total weight	approx. 19 t	approx. 20 t	approx. 27 t	approx. 32 t	approx. 35 t	approx. 54 t	approx. 55 t

* depending on input density and main drive

**depending on input density and bale length

subject to changes in design and dimensions!

DIMENSIONS	A	B	C	D	E	F	G	H	J	K
60 V	9.650	4.900	4.750	4.050	1.400	3.980	3.600	5.120	520	750
70 V	10.050	5.200	4.850	4.050	1.600	3.980	3.600	5.120	520	750
80 V	11.425	5.995	5.430	4.530	1.800	3.980	3.600	5.120	520	750
100 V	13.220	6.550	6.670	5.670	2.000	4.280	4.200	5.200	780	750
120 V	13.220	6.550	6.670	5.670	2.000	4.280	4.200	5.200	780	750
150 V	14.595	6.925	7.670	6.670	2.000	4.900	4.200	5.600	780	1.100
200 V	15.455	6.925	8.530	7.530	2.000	4.900	4.200	5.600	780	1.100

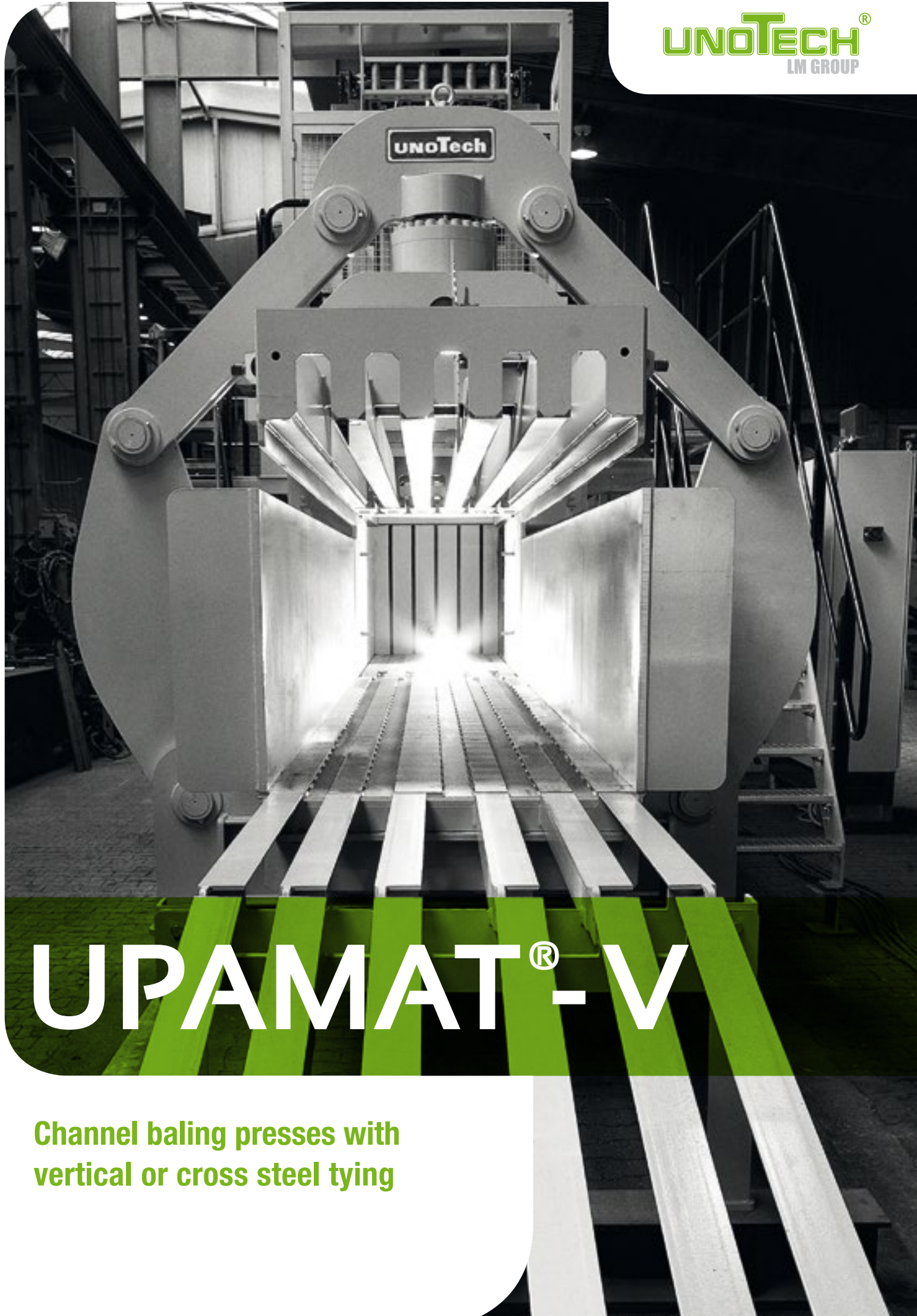
subject to changes in design and dimensions!



unoTech GmbH • Feldkoppel 17 • 49779 Niederlangen • Germany
Phone +49 (0) 5939 / 94 144 - 11 • Fax: +49 (0) 5939 / 94 144 - 30
info@unotech.de • www.unotech.de



UNOTECH®. INNOVATION DRIVEN BY EXPERIENCE.



UNOTECH®
LM GROUP

UPAMAT®-V

Channel baling presses with
vertical or cross steel tying

MADE IN
GERMANY**1. MANIFOLD HYDRAULIC BLOCK**

- Oversized hydraulic block made of forged steel
- Minimum flow losses due to reduced piping
- All hydraulic valves state of the art
- Shortest press plate cycle times without any closing shocks

2. POWER PACK

- Highly efficient robust baler main drive
- Alternatively with internal gear pumps or axial piston pumps
- Peak pressure 400 bar working pressure up to 310 bar
- Oversized additional auxiliary devices for cooling and filtration circuits
- Minimum noise level due to absorption of structure-borne noise
- Internal monitoring for all function sequences
- Consideration of all basic legal information regarding water protection

3. PRESS PLATE

- Press plate available with fully automatic vertical slot covers
- Press plate guiding via centrally mounted bolted guiding frame
- Labyrinth seal for top and lateral surfaces
- Heavy roller guiding as well as sliding guides for press plate
- All wear protection for all press plate contact surfaces
- Relief grinded knife system for highest cutting performance

4. SHEAR SYSTEM

- High performance counter knife system with angular mounted cutting knives leading to max. bale stability
- Large relief clearance angle above cutting edge suitable for all heavy material grades
- Segmented counter knife system

5. STAMPER

- Clearance down force 25 to
- Stamper guiding rails with easy access to allow taking over heavy off-centre loads
- Directly mounted on top of the counter knife system of the baler
- Generously dimensioned hydraulic valve technology for shortest cycle times

6. AUTOMATIC TYING

- Cycle time for automatic tying within 7 sec.
- Suitable for wire thicknesses from 3,1 up to 4,1 mm
- Wire insertion for top and bottom wire lane
- Fully automatic wire cutting device
- Cross-tying available for all types of UPAMAT-V series

7. WIRE PULL

- Four-point contact guiding for needle bar
- Adjustable guiding blocs for needle bar
- Wear parts replacement via "quick release" system
- Wire pull drive using twin chain guiding

8. OPERATOR PANEL

- Easy and safe user / operator guidance system
- Display of all states for operation and maintenance
- Menu management
- Easy and safe operation for hand and automatic mode
- Fault indicator

9. BALER SAFETY

- Modular baler safety system via key transfer system including the prevention of lock-in danger

